



Gender sensitivity & human trafficking work

- To draw attention to the important of working on human trafficking with gender sensitive and rights based approach
- Integration of gender perspective in working with trafficked persons in the process of – rescue - return – repatriation – reintegration



Sex & Gender

- To understand the terms
sex – gender
gender sensitivity
rights based approach

By Self – reflection and assessment

- To be able to apply in trafficking project



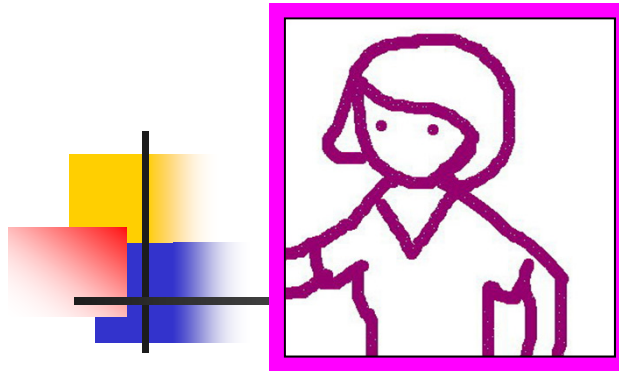
Teaching for Men & women



9/13/2011

Usa / Foundation for Women

3



- Obedience
- Protect virginity
- Sweet
- Good mother
- Caring
- Squire

- leader
- experiences
- Strong
- Confident
- Brave
- efficient



Sex & Gender

Sex =

- It is biology
- sexual differences are the same through out human

Gender =

- What society defines women & men
- expectation towards women & men
- being men & women differs from culture to culture

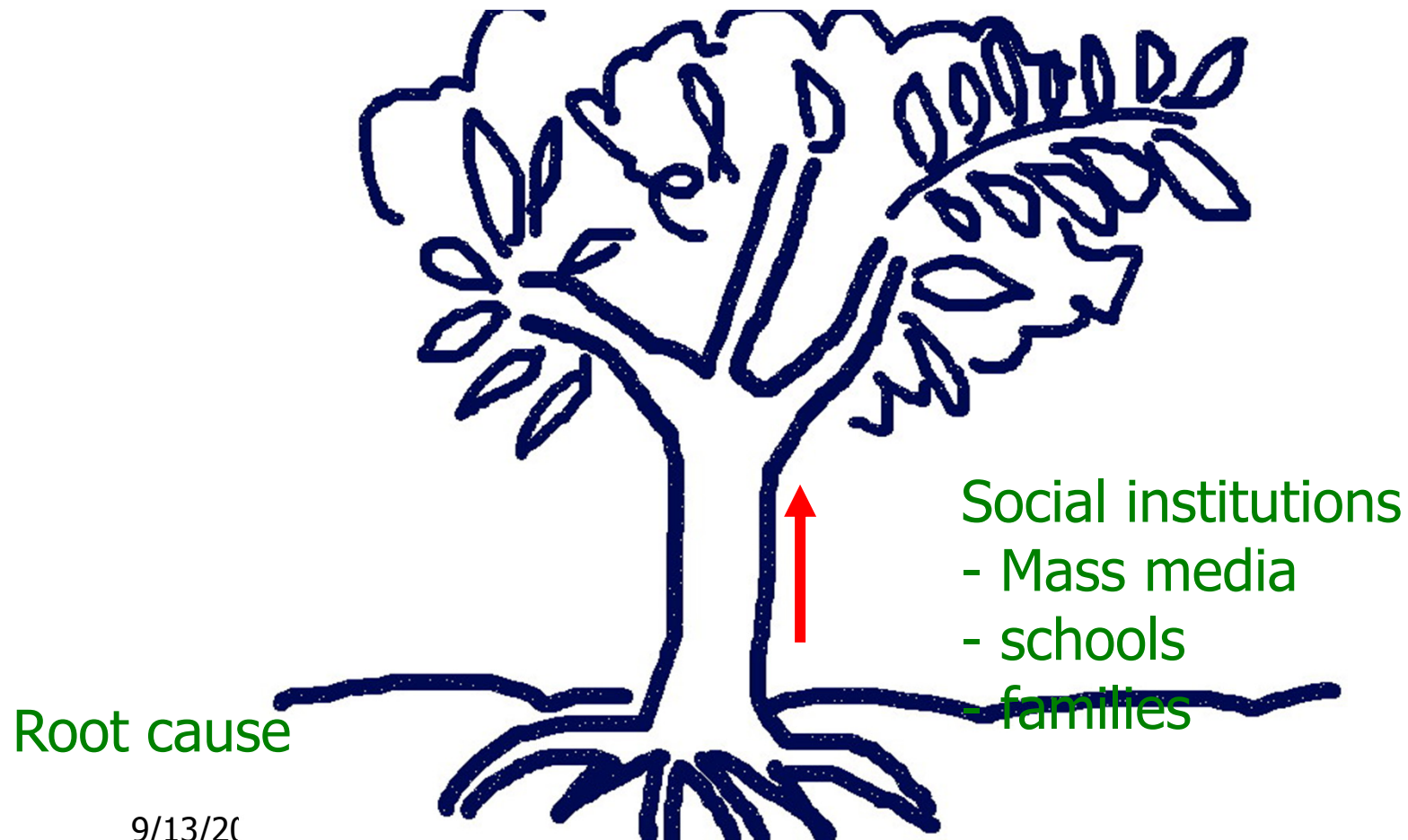


Gender = Social relations

- Reproductive Work
- Social Power Relations
- Femininity: masculinity
- Social Norm, Value



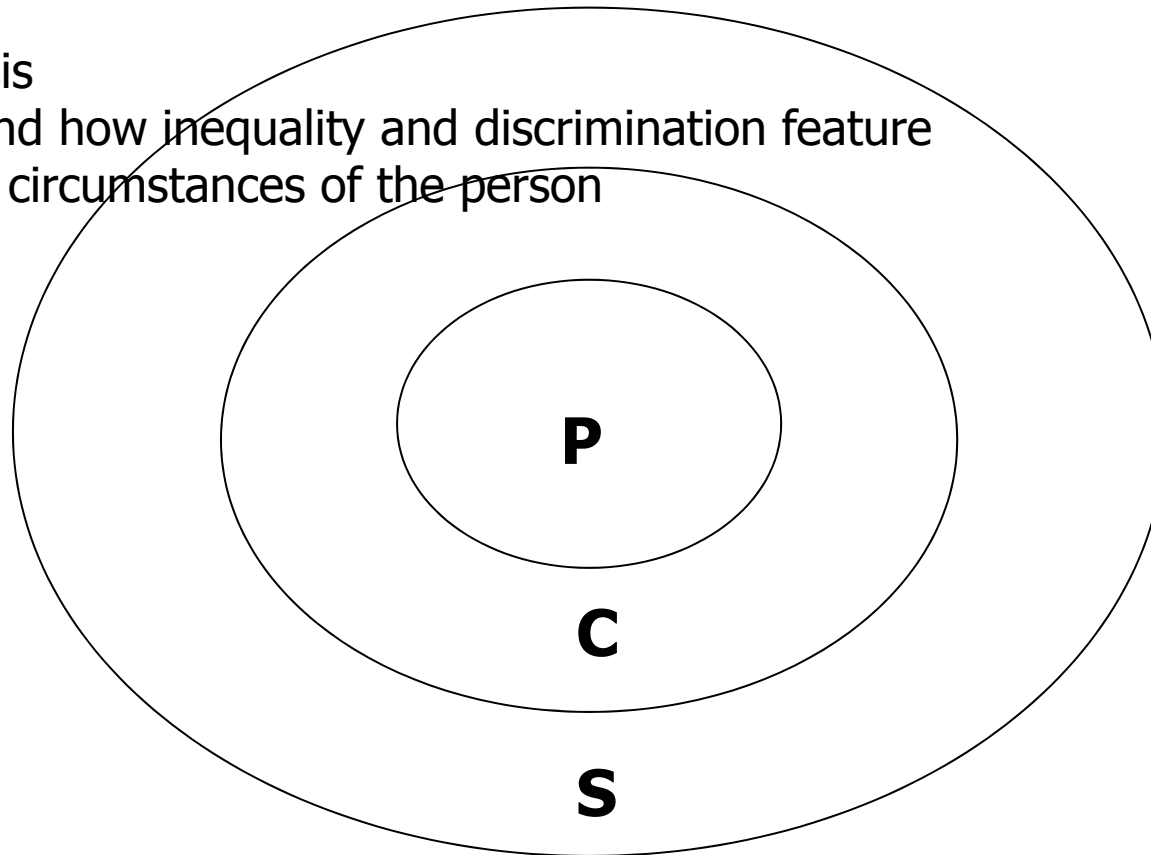
How gender maintain in the society



Why do we need gender sensitive approach ?

P C S analysis

To understand how inequality and discrimination feature in the social circumstances of the person





What happen if a person does not follow this norm?

in family society &
community


- Not accepted
- Sanction
- Social exclusion
- punish



Thinking Style

- Linear Thinking Style
- Hierarchical Thinking Style
- Dichotomy thinking Style

- Holistic Thinking Style

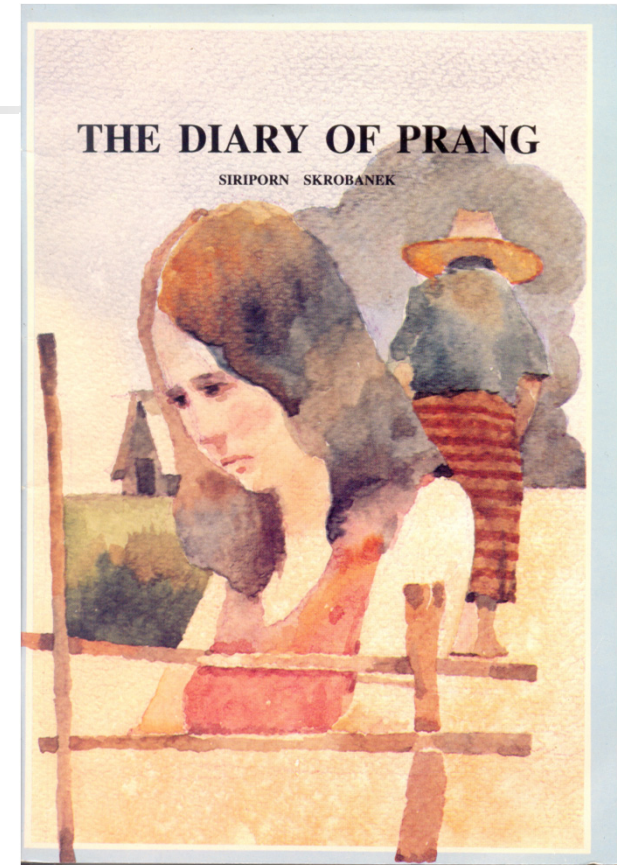
- 
- Ant was a second year student of a University in Bangkok. During a vocation, she wanted to earn money so she decided to follow a woman who married to an English man to go to work in a spa in UK.
-

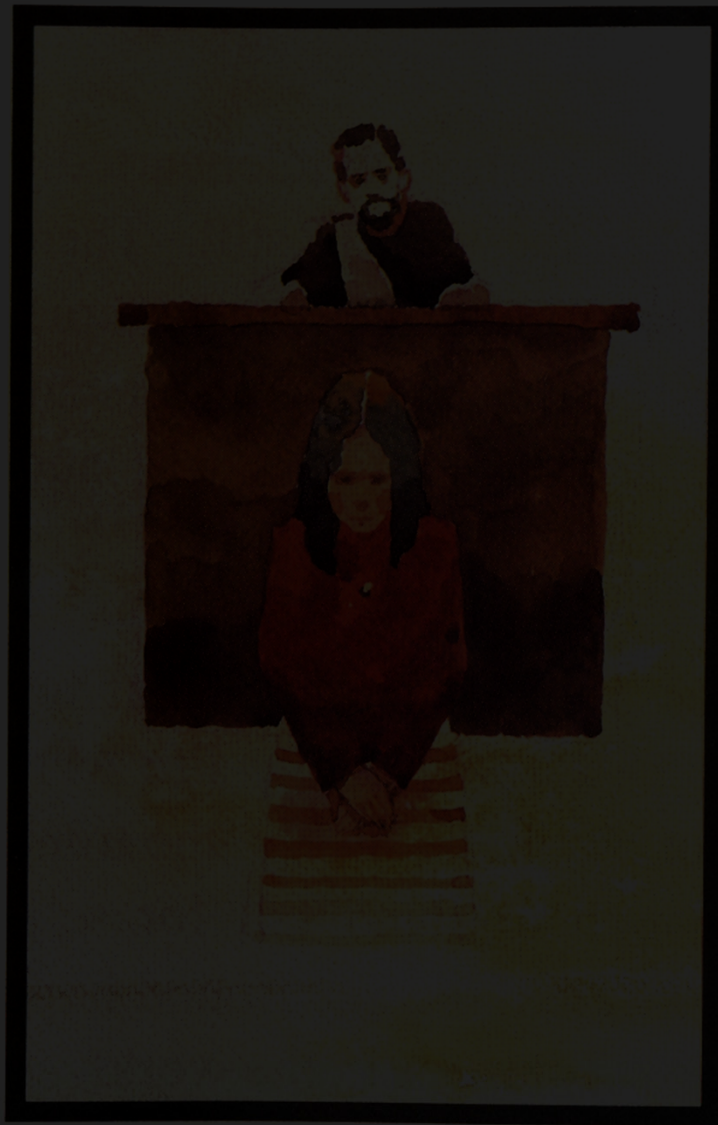
- When she arrived, the agent told her to work as a call girl. Later she could call to her friend to help and the police could rescue her from the apartment. The trafficker was arrested and prosecuted. Ant told the police that she didn't go with customer yet and she was repatriated back to Thailand.
- About eight month later, she returned to be a witness in the court. She met the trafficker. She told the social worker from an NGO that she was forced to go with a customer one time.

Why did Ant tell the police and the social worker differently?

- A story of a woman who was from rural Thailand, migrated to work in a Bar in Patpong to escape the misery of life with a violent husband. She met a Chinese man and then moved to be with him but found that he is a gambler.

Afterwards, she wanted to get an amount of money to help protect the land of her parents. An agent persuaded her to be a waitress in Germany so she decided to go. Later she found herself forced into prostitution again.





*Why go to Pat -
pong, a place
decent women
avoid? Why stay
with the Chinese
man? How many
men
have you had in
your life? How
did you feel?
What did you do
at the bar? Why
and Why?*

The court provided me with an interpreter since I could not speak German. The trial dragged on and on. Witness after witness brought to the court by the defendants had been



Please read the case study and discuss

- What do you think about the attitude of the Court?
- How do people in your country think about women in sex work?
- What do you think?



Gender response

- Practical gender needs
- Strategic gender needs



Gender - aware policies

- **Gender-neutral policies** --- ensure that interventions target and benefit both sexes effectively to meet their practical gender needs
- **Gender-specific policies** --- aware of existing gender division of resources and responsibilities
- **Gender-redistributive policies** --- to transform existing distribution of power and resources to create a more balanced relationship